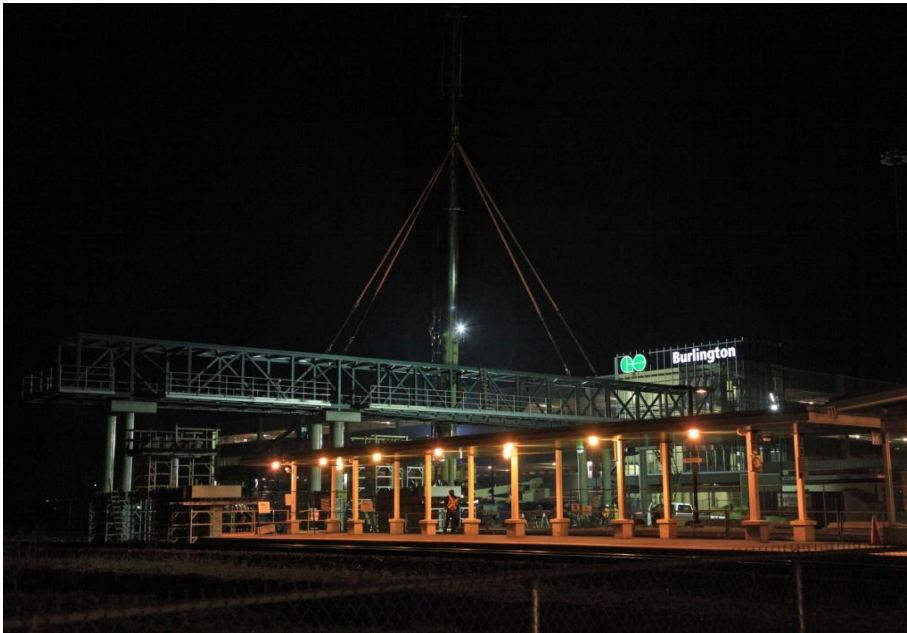


PROJECT PROFILE



Metrolinx/ Go Transit, in an effort to improve accessibility to their stations, embarked on an improvement project on their Georgetown CN Rail Corridor. In addition to improvements in their parking lots, tunnels and platforms, Parkland Bridges o/a Resource Industrial Group Inc was awarded the Design, Engineering, Fabrication, Transport, Assembly and Installation portions of the Go-Burlington contract to upgrade their pedestrian rail track overpass. Our Design and Project Management Specialists collaborated with the various construction and engineer specialists to design and fabricate a 180 foot long single span pedestrian overpass complete with an additional external maintenance access catwalk.

Upon completion of the fabrication of bridge and catwalk, our contracted team of transport specialists moved the bridge and catwalk to a staging

area for assembly and installation. Wide and Oversize load transport protocol involving timing and escorts was planned and executed without a hitch.

Our certified riggers and welders were given 3 weeks to assemble the bridge and catwalk in an extremely congested worksite on a nearby CN service track, all of them trained in CN Rules and Regulations and certified for track clearance. After coordinating all inspections and Quality Control professionals, RIG's project managers staged the Final 3 hour nighttime installation window. Tracks were shut down, equipment rolled in and the planned engineered lifting procedures with a 350 ton crane commenced. The success of this project has solidified RIG's contract position at the future station improvement at the Pickering GO Terminal.

CUSTOMER

Metrolinx Go Burlington

PROJECT

Pedestrian Rail Track Overpass

LOCATION

Burlington, ON

